

TAX PAYMENT OPTIONS

Pre-authorized Payment Plan (PAP)

Visit our website to complete the Pre-authorized Payment Plan Form. Email your forms in along with a void cheque or a form from your bank. You'll have the option of signing up for one of two options:

- **Monthly** - Normally, monthly payments are withdrawn on the last banking day of the month from January to October (10 months). During the COVID-19 pandemic, **PAP amounts for the final tax billing will be divided over 7 months (June to December)**, extending the amount payable each month. Property owners on a PAP plan may cancel their plan at any time.
- **Due Date** - Payments will be withdrawn on the last banking day of the month.

Tax Arrears (PAP)

- If your payments are overdue, please contact Financial Services to make arrangements for monthly payments.

Electronically

- For Internet banking, add INNISFIL TAXES as your payee. Your account number is the 19-digit assessment roll number found on your tax bill. Please allow 3-5 business days for payment processing.

Pay with Bitcoin

Head to [innisfil.ca/bitcoin](https://www.innisfil.ca/bitcoin) for details and instructions. You will need your Name, Address, and Roll No. / Memo.

Cheque

Due to COVID-19, our office remains closed to the public until further notice. For cheque payments there is an after-hours drop box located at Town Hall. Payments may also be submitted by regular mail. To help protect the health and safety of our staff, we are not accepting cash payments at this time.

Credit Card - Online Only

Please login to [innisfil.plastiq.com](https://www.innisfil.plastiq.com) and follow the prompts. Your account number is the 19-digit assessment roll number found on your tax bill. A convenience fee will apply. Please allow 3-5 business days for payment processing.

REMEMBER: Hang on to your final tax bill.

There is a \$22 fee to re-print a tax receipt or final tax bill.



Sign up for e-billing and you'll get an e-mail notification when your tax bill is ready. Access your property tax information online at any time. Find out more at www.innisfil.ca/yourtaxes

PENALTY & INTEREST

- Interest and penalty charges on outstanding property taxes will be further **waived until December 31, 2020** to help residents financially during the COVID-19 pandemic.
- Interest charges on accounts receivable will also be waived until December 31, 2020.
- Visit [innisfil.ca/propertytaxfaq](https://www.innisfil.ca/propertytaxfaq) for more information on property taxes during the COVID-19 pandemic.

DUE DATES

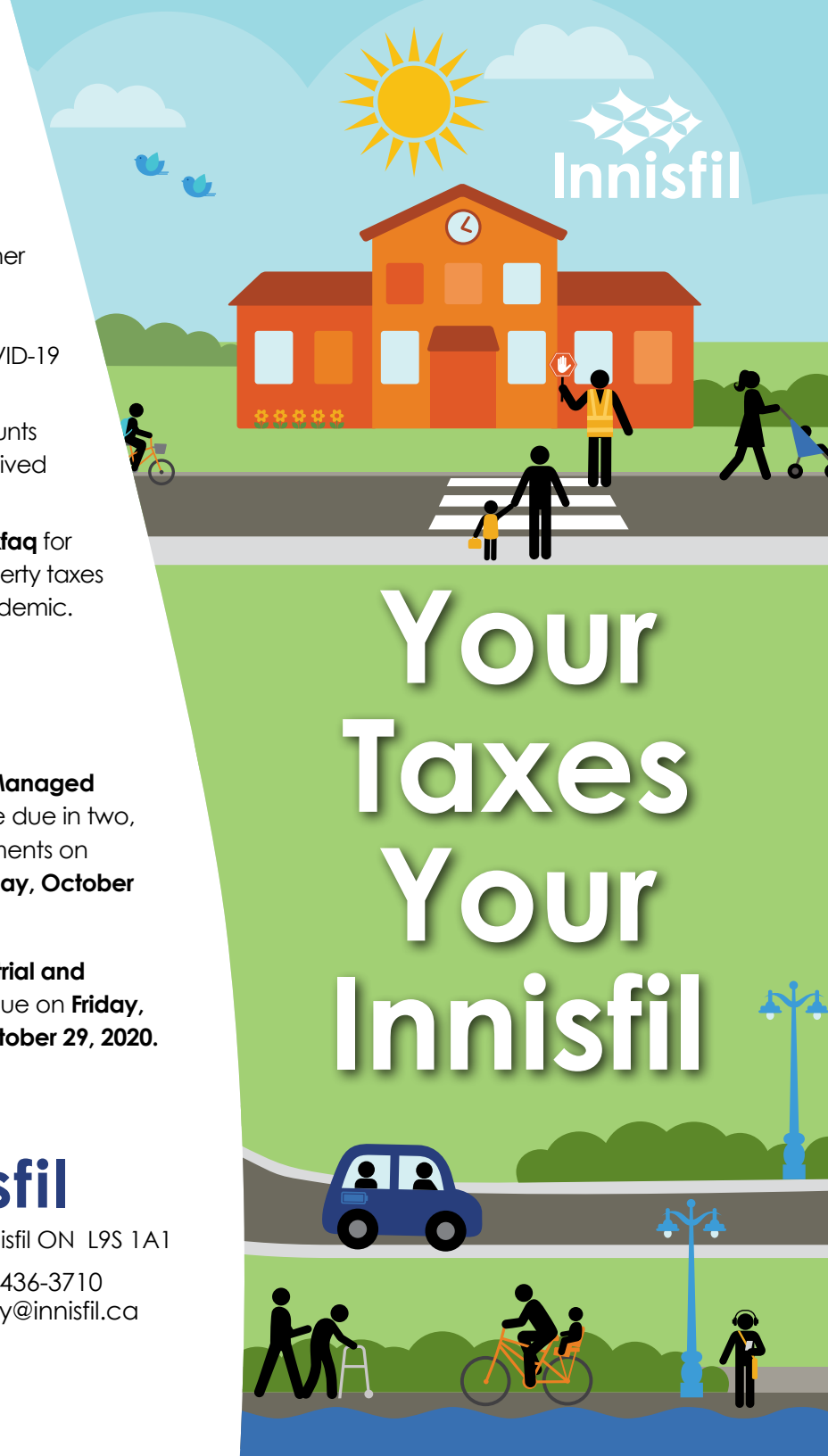
The final **Residential, Farm, Managed Forest and Pipeline taxes** are due in two, approximately equal installments on **Thursday, July 30 and Thursday, October 29, 2020.**

The final **Commercial, Industrial and Multi-Residential taxes** are due on **Friday, August 28 and Thursday, October 29, 2020.**



2101 Innisfil Beach Road, Innisfil ON L9S 1A1

705-436-3710 | 1-888-436-3710
www.innisfil.ca | inquiry@innisfil.ca



Your Taxes Your Innisfil

HOW ARE MY PROPERTY TAXES CALCULATED?



* for the applicable class of property

WHO DECIDES HOW MUCH I PAY?

The **Municipal Property Assessment Corporation (MPAC)** is responsible for assessing all property values in Innisfil, which is then provided to the Town in order to calculate property and education taxes.

2020 Assessment Update

The Ontario government has announced that the 2020 Assessment Update has been postponed. They have indicated that property assessments for the 2021 property tax year will continue to be based on the fully phased-in January 1, 2016 current values. This means your property assessment for the 2021 property tax year will be the same as the 2020 tax year, unless there have been changes to your property.

Questions about your assessment?

Call MPAC at **1-866-296-6722** or visit **mpac.ca** to learn more about how your property was assessed or if you disagree with MPAC's assessment or classification of your property.

SUSPENDED FEES & CHARGES

Fees for the following items in our Fees & Charges By-law will be suspended until December 31, 2020:

- Returned Item Charge
- Withdrawal of Post-Dated Cheques
- Zoning Compliance Letter
- Draft Plan Subdivision Conditions Extension
- Reactivation Fee (pre-authorized payment plans)

SUSPENSION OF TAX REGISTRATION PROCESS

With Ontario Regulation 73/20 made under the *Emergency Management and Civil Protection Act*, statutory deadlines for tax sale-related matters have been suspended.

Once the order has been lifted, the process can resume. However, to continue supporting our residents during the COVID-19 pandemic, the Town of Innisfil will not continue or initiate any tax sale processes for the remainder of 2020. Staff will continue to work with property owners in developing payment plans in an effort to manage their tax arrears. Please contact Financial Services at 705-436-3710 or finance@innisfil.ca for more information.

WHAT DO MY TAXES GET ME?

For approximately \$350* per month, our property taxes give us the freedom to...



BE SAFE

Our firefighters and police officers are committed to safeguarding the community and being there in all types of emergencies.

JOIN A FUTURE FOCUSED JOURNEY

Seeking innovative solutions has led to tailored transportation options and improved health services that will drive us towards an ideal Innisfil.

COVID-19 UPDATE

We've introduced virtual library and recreation programming, Innisfil Transit fare assistance, digital boat launch bookings, an online marketplace for local businesses and so much more to help you access the services you need during the COVID-19 pandemic.

LEARN, DISCOVER & EXPERIENCE

Schools, libraries, parks and recreation centres enhance our quality of life with meaningful opportunities for engagement, education, health and well-being.

LIVE IN A CLEAN, THRIVING COMMUNITY

Effective waste management protects our natural environment, keeps our lake healthy and gives us access to clean drinking water at the twist of a tap.

BE CONNECTED

A lot goes into keeping our roads, sidewalks and trails clear, clean and safe, such as improvements to existing services like streetlights and snow removal.



*Based on the average residential assessment.

For more details about your property taxes please visit www.innisfil.ca/yourtaxes