

The **South Innisfil Creek Drain (SICD)** is a municipal drain that is being improved under the Drainage Act. This multi-year project will have physical and financial impacts on properties that may come up for sale in the coming years within Innisfil.



- Phase I** – January 2021 to November 2021
- Phase II** – November 2021 to November 2022
- Phase III** – November 2022 to November 2023

Construction Schedule

Construction will begin in 2021 and is scheduled to be completed in phases (see the SICD Location Map). Properties located along the SICD Main Drain or on one of the four branch drains will have physical and financial impacts.

History Behind the South Innisfil Creek Drain

The SICD was created over 100 years ago in response to repeated flooding of the properties surrounding the South Innisfil Creek. The watershed, where the drain is located, collects water from over 800 properties across Innisfil and Bradford West Gwillimbury and directs it to the drain. The drain, in turn, empties into the Nottawasaga River.

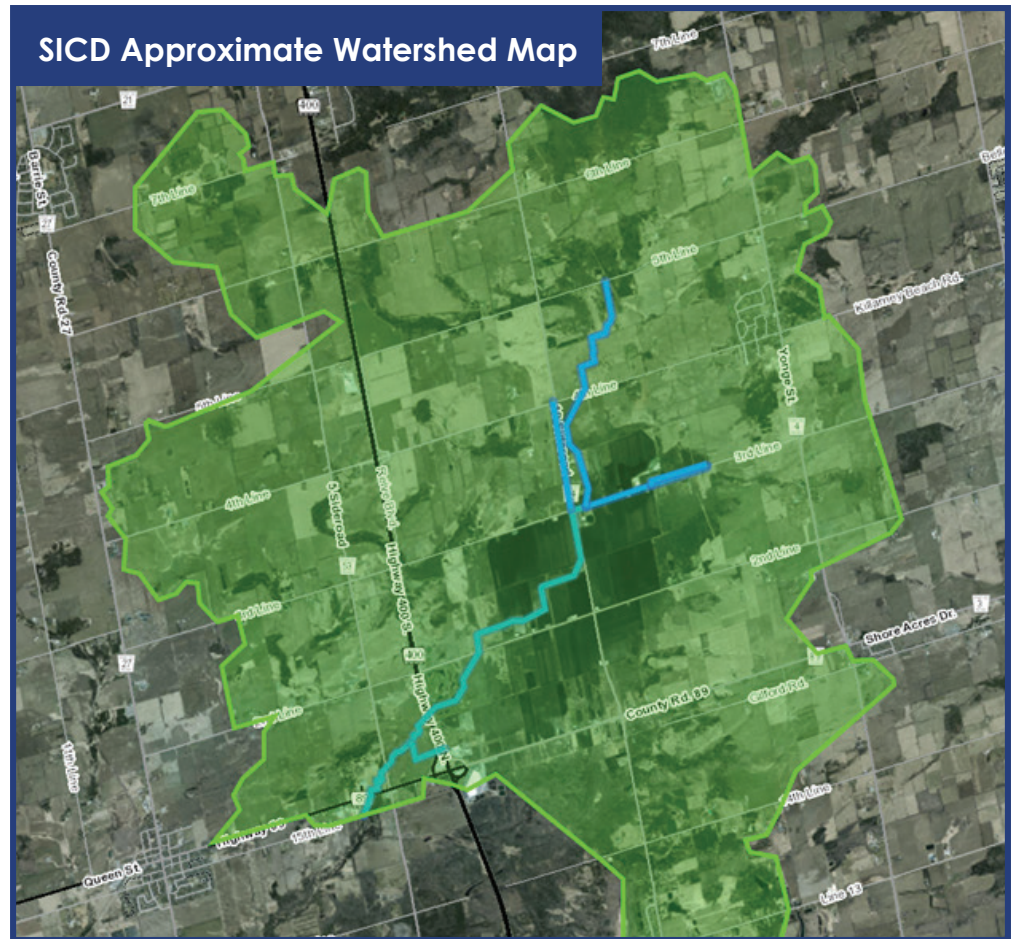
All properties within the watershed contribute water in some way to the drain. Therefore, improvements to the drain will benefit everyone.

SICD Watershed

Properties located within the SICD watershed that are not physically located on the drain, as shown in the Approximate Watershed Map, will only be financially impacted.

Questions?

Any questions regarding the planned construction or possible physical / financial impacts to properties can be directed to Jeremy Nyenhuis, Drainage Superintendent, at jnyenhuis@innisfil.ca.



So, what's a municipal drain?

Perhaps you've just purchased property and been told by your municipality that you are assessed into a municipal drain. You're probably wondering, what does this mean? How does it affect me? What will it cost?

Municipal drains are created by the community. It is a partnership between landowners and the municipality, and the terms of that partnership—including cost sharing and maintenance—are dictated by the Drainage Act. Physically, a municipal drain is simply a drainage system. Most municipal drains are either ditches or closed systems such as pipes or tiles buried in the ground. They can also include structures such as pumping stations, buffer strips, stormwater detention ponds, culverts and bridges. The local municipality is responsible for maintaining municipal drains on behalf of the landowners involved in the drain.

The Town of Innisfil has 24 municipal drains spread throughout the municipality, which have numerous properties that can be affected both physically and financially when maintenance works are required on any one of these 24 drains.