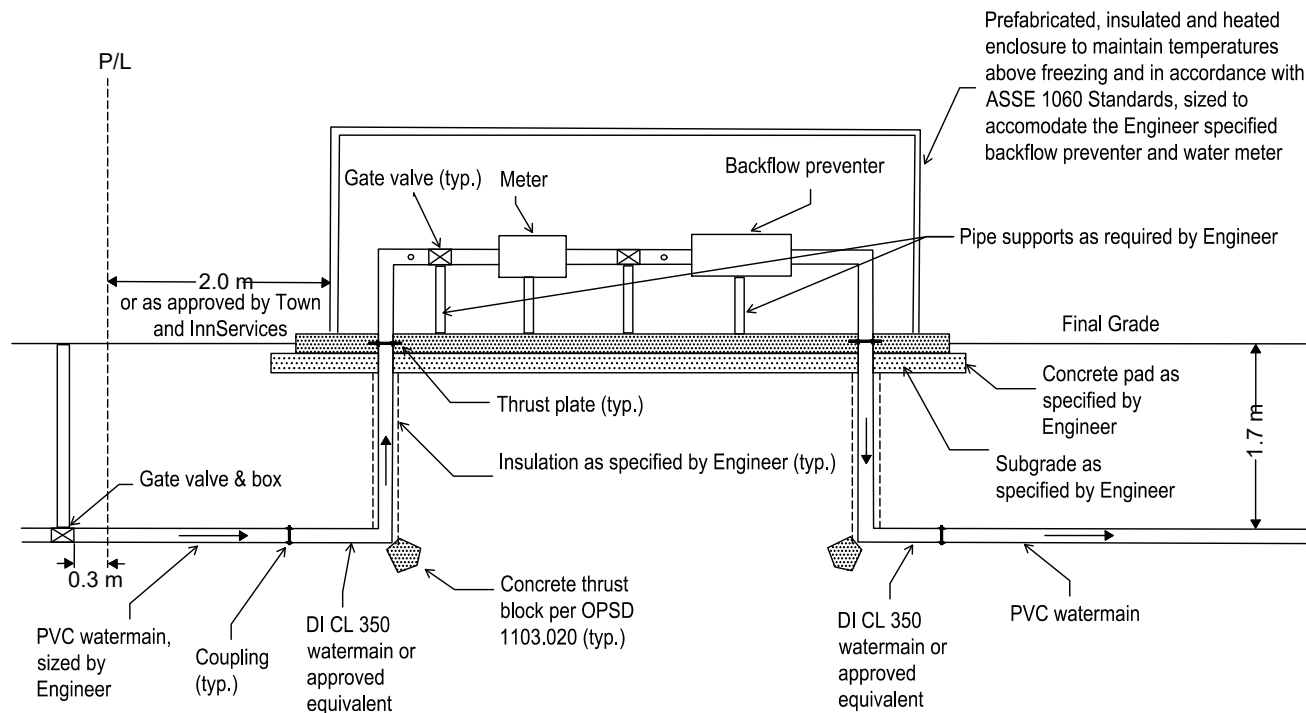


Plan View



NOTES:

1. INNSERVICES SHALL BE ALLOWED ACCESS TO THE ENCLOSURE AT ALL TIMES TO INSPECT/MAINTAIN THE WATER METER. DOOR ACCESS TO BE PROVIDED AT THE SIDE OF METER.
2. ADEQUATE CLEARANCE MUST BE PROVIDED AROUND THE ENCLOSURE FOR INNSERVICES TO ACCESS DURING TESTING AND MAINTENANCE OF THE METER.
3. A WATER METER TOUCHPAD READER IS TO BE MOUNTED OUTSIDE OF THE ENCLOSURE.
4. WATER METER SHALL BE SELECTED BY THE ENGINEER AND SHALL BE APPROVED BY INNSERVICES. ENGINEER TO ENSURE REQUIRED DISTANCE OF STRAIGHT PIPE PRIOR TO AND AFTER METER IS PROVIDED.
5. ENCLOSURE SIZE SHALL VARY FOR METER SIZES AND BACKFLOW PREVENTER SIZES AS PER MANUFACTURER SPECIFICATIONS AND TO THE SATISFACTION OF THE TOWN AND INNSERVICES. A PROJECT SPECIFIC ENCLOSURE DETAIL SHALL BE PROVIDED BY THE ENGINEER BASED ON REQUIREMENTS IN TOISD 726.
6. THE BACKFLOW PREVENTION DEVICE, APPURTENANCES AND ENCLOSURE MUST BE SELECTED AND MAINTAINED IN ACCORDANCE WITH MANUFACTURER'S SPECIFICATIONS, AND THE GUIDELINES SET OUT IN THE MOST RECENT VERSION OF THE AWWA CANADIAN CROSS CONNECTION CONTROL MANUAL, CSA STANDARDS, ONTARIO BUILDING CODE AND APPLICABLE PROVINCIAL REGULATIONS. THE BACKFLOW PREVENTION DEVICE SHALL BE RATED FOR THE REQUIRED DOMESTIC DEMAND PLUS FIRE FLOWS.
7. BOND BREAKER REQUIRED BETWEEN PIPE/METER AND SUPPORT IF CONCRETE PIPE SUPPORTS ARE USED.
8. NO CONNECTIONS ARE PERMITTED BETWEEN THE WATER METER (AND IT'S BY-PASS) AND THE BACKFLOW PREVENTER.
9. BACKFLOW PREVENTER MUST BE INSTALLED NO MORE THAN 1.5M DOWNSTREAM OF WATER METER.



BACKFLOW PREVENTER ENCLOSURE

DRAWN: CCTA

APR'D: TOI

SCALE: N.T.S.

DATE: MAY 2021

1.	Revise Notes	TOI	MAY 2022
NO.	REVISIONS	APR'D	DATE

METRIC
ALL DIMENSIONS IN mm
UNLESS OTHERWISE NOTED

**TOISD
726**