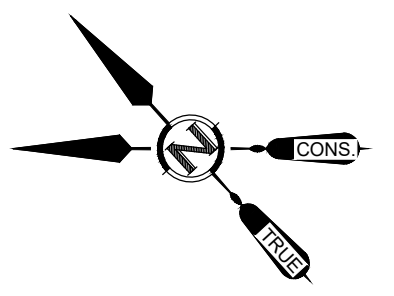
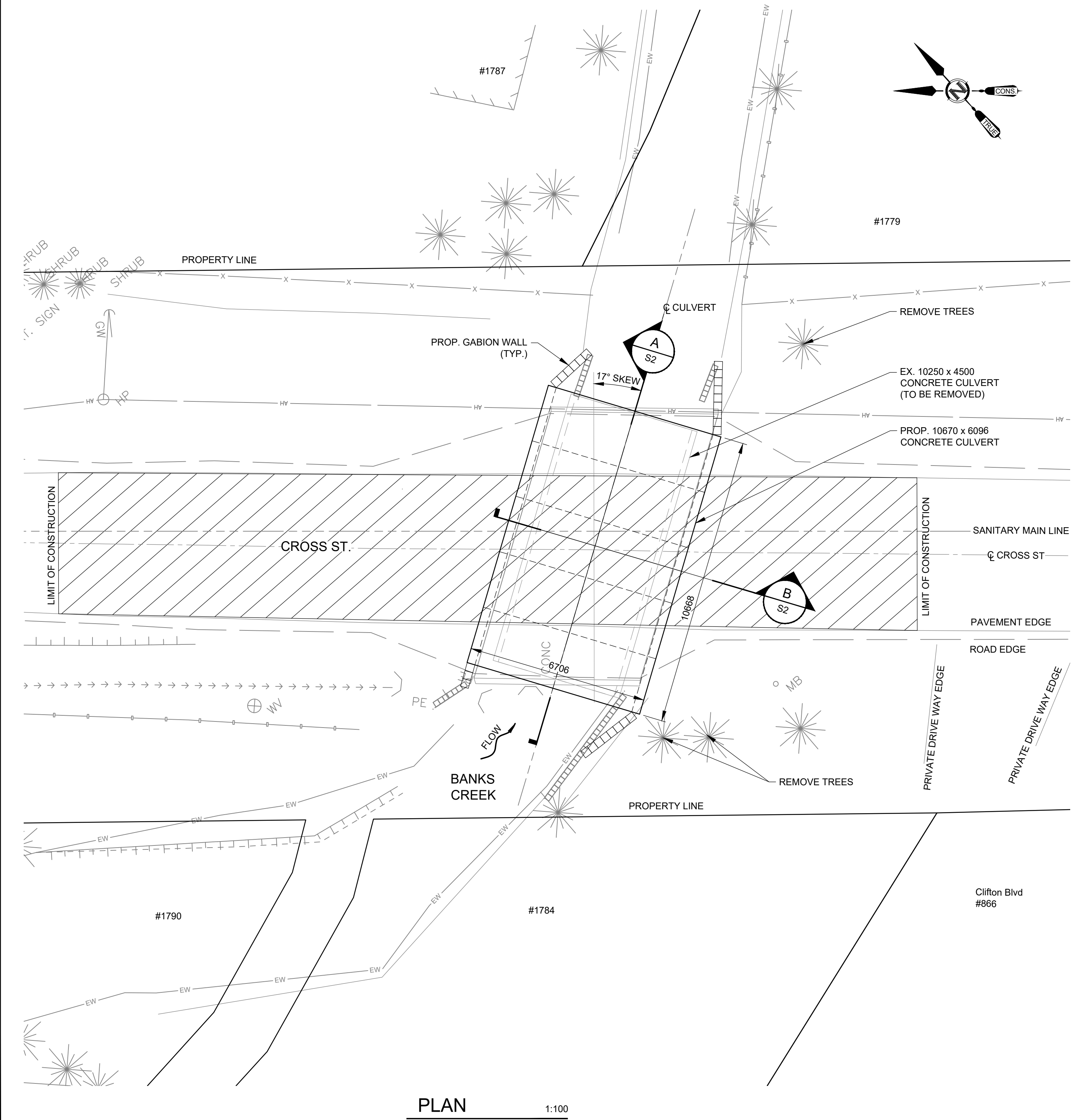


APPENDIX D - PRELIMINARY DRAWINGS



GENERAL NOTES:

- DIMENSIONS OF EXISTING STRUCTURE ARE BASED ON FIELD MEASUREMENT AND JUDGEMENT BASED ON AVAILABLE INFORMATION; RELATIVE LOCATIONS OF UNDERGROUND UTILITIES (WATERMANS, SANITARY, ETC.) ARE ACCORDING TO EXISTING DESIGN DRAWINGS AND AS-BUILT INFORMATION FOR THE UTILITIES ARE NOT AVAILABLE
- DESIGN STANDARD AND CODES
 - CHBDC CAN/CSA-S6-14
 - MTO STRUCTURAL MANUAL
 - MTO CULVERT DESIGN AND DETAILING MANUAL
 - ONTARIO PROVINCIAL STANDARD SPECIFICATIONS (OPSS)
- LIVE LOAD: CL-625-ONT
- CLASS OF CONCRETE
 - PRECAST CULVERT 35MPa
 - UNLESS NOTED OTHERWISE
- CLEAR COVER FOR CULVERT REINFORCING STEEL
 - 50±10MM UNLESS OTHERWISE NOTED
- REINFORCING STEEL
 - REINFORCING STEEL SHALL BE GRADE 400W UNLESS OTHERWISE SPECIFIED BAR. HOOKS SHALL HAVE STANDARD HOOK DIMENSIONS USING MINIMUM HOOK DIMENSIONS. ALL HOOKS SHALL BE IN ACCORDANCE WITH THE STRUCTURAL STANDARD DRAWING SS12-1 UNLESS NOTED OTHERWISE
- ALL DIMENSIONS IN MILLIMETERS AND ALL ELEVATIONS ARE IN METERS UNLESS OTHERWISE NOTED
- ASSOCIATED ENGINEERING (ONT.) LTD. DOES NOT ASSUME ANY RESPONSIBILITY FOR LOSSES, DAMAGES, AND COSTS ARISING FROM THE USE OR REUSE OF THESE DRAWINGS BY PERSON, FIRMS, OR CORPORATIONS WITHOUT PRIOR WRITTEN CONSENT

CONSTRUCTION NOTES:

- BACKFILL SHALL BE PLACED SIMULTANEOUSLY BEHIND BOTH SIDES OF CULVERT KEEPING THE HEIGHT OF BACKFILL APPROXIMATELY THE SAME. AT NO TIME SHALL THE DIFFERENCE IN ELEVATION BE GREATER THAN 200MM.

FOUNDATION NOTES:

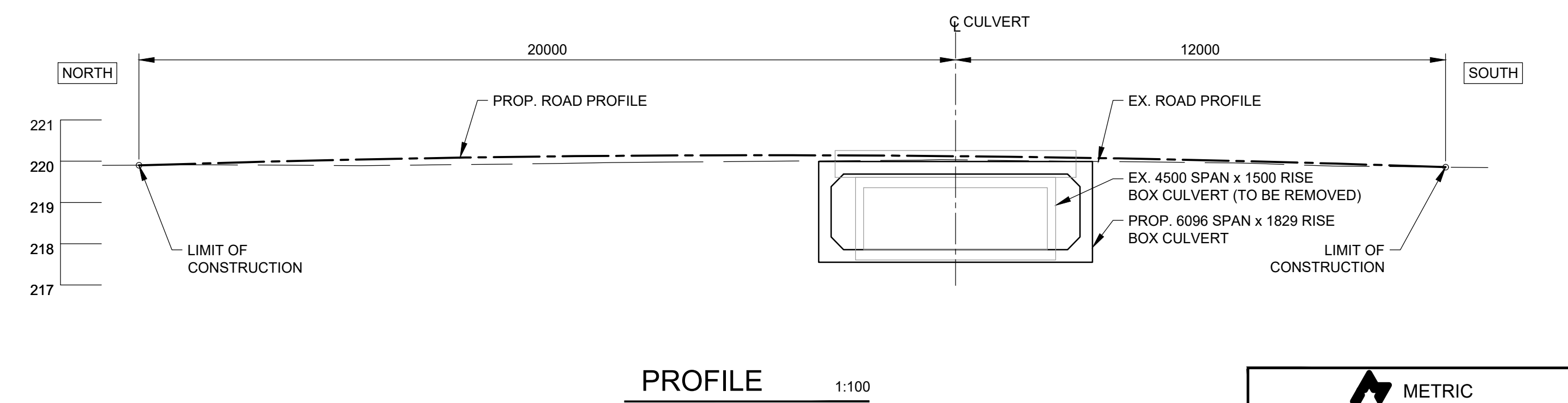
- DESIGN BEARING CAPACITY
 - SLS = XX kPa
 - ULS = XX kPa

LIST OF ABBREVIATIONS

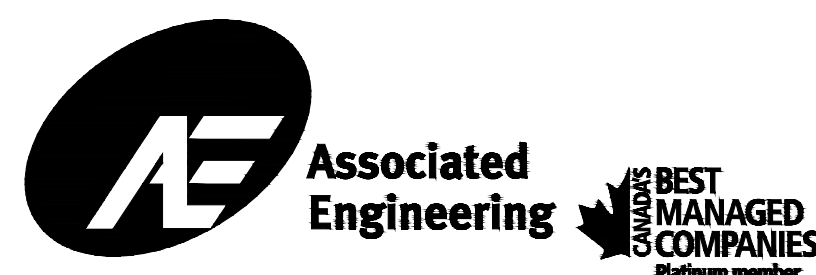
EL.	-	ELEVATION
TYP.	-	TYPICAL
PROP.	-	PROPOSED
EX.	-	EXISTING
APP.	-	APPROXIMATELY

APPLICABLE STANDARD DRAWINGS

SS12-1	HOOK DIMENSIONS FOR REINFORCING STEEL BARS
OPSD 1109.030	INSULATION FOR SEWERS AND WATERMANS IN SHALLOW TRENCHES



METRIC
MEASUREMENTS SHOWN HERE ARE IN MILLIMETERS UNLESS OTHERWISE NOTED



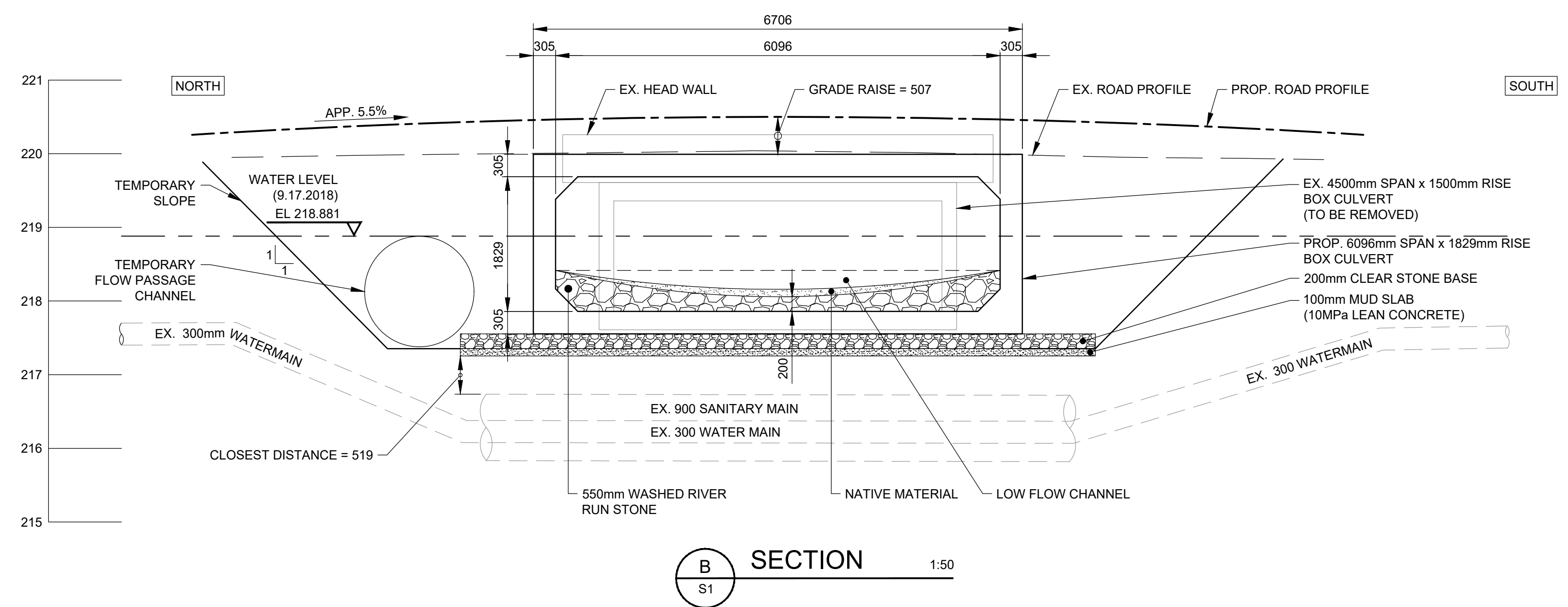
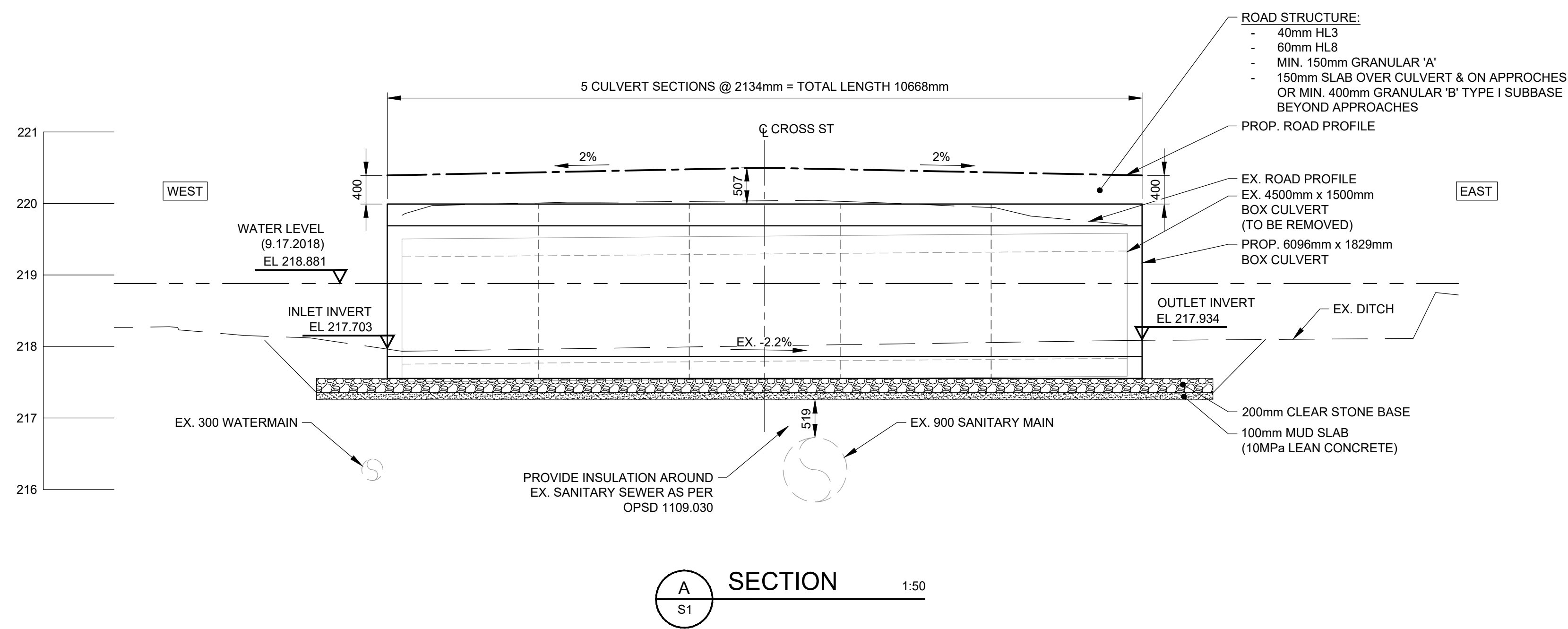
REV	DATE	DESIGN	DRAWN	DESCRIPTION
A	2018OCT12	S.N./S.Z.	A.W.	ISSUED FOR 30% REVIEW

TOWN OF INNISFIL
**CROSS STREET
CULVERT REPLACEMENT**
20185229
SCALE: AS SHOWN

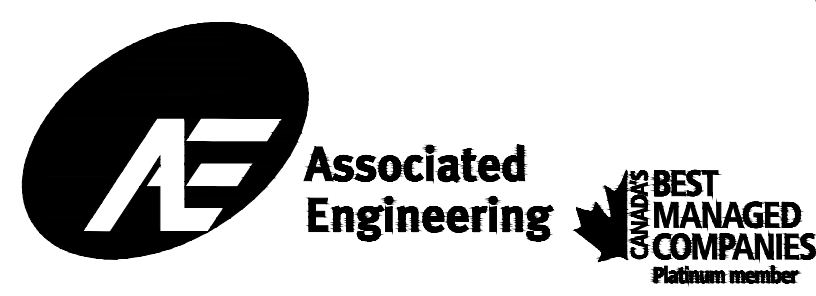


STRUCTURAL
GENERAL ARRANGEMENT

DRAWING	REVISION	SHEET
S1	A	1 / 2



METRIC
MEASUREMENTS SHOWN HERE ARE IN
MILIMETERS UNLESS OTHERWISE NOTED



A	2018OCT12	S.N. / S.Z.	A.W.	ISSUED FOR 30% REVIEW
REV	DATE	DESIGN	DRAWN	DESCRIPTION

TOWN OF INNISFIL
CROSS STREET
CULVERT REPLACEMENT
20185229
SCALE: AS SHOWN



STRUCTURAL SECTIONS

DRAWING	REVISION	SHEET
S2	A	2 / 2