



Orbit Potential and Innovation Plan (OPIP) YouthConnex Meeting





OPIP YouthConnex Meeting

June 15th, 2022
Rizzardo Health & Wellness Centre
7325 Yonge St. Innisfil, ON

Recorded Attendance

13 guests

Event Agenda

This meeting was structured as a presentation and hands-on working session, the meeting agenda consisted of:

Project Introduction:

The Project Team
What is Orbit and the OPIP?
How is Orbit being developed?
Who are we talking to?

Break-out mapping sessions

Feedback Methods

To solicit meaningful feedback during the meeting the project team offered various opportunities to voice opinions and pose questions including:

- One survey prompting individuals to provide feedback about the meeting and about certain aspects of the future Orbit that matter to them (See Appendix A)
- One breakout session led by a project team member to prompt and answer questions





Meeting Summary

This summarizes the general topics of discussion from the meeting, feedback from the participations, and topics for future discussion. All feedback from this meeting is being used to inform the OPIP.

Comments

- Suggestions for how to weave green space into the Orbit while ensuring amenities and services are accessible
- Interest in incorporating green energy into the development of any new schools in the Orbit
- Walkability for youth is paramount
- Need to provide opportunities for youth to interact with nature

Areas of Concern

- Need for cultural diversity
- How to prevent litter in Innisfil and the Orbit
- Connecting existing neighbourhoods to the Orbit
- Current neighbourhoods do not have walking access to retail services
- Preventing beach pollution, especially beach access near the Orbit
- Need for lighting
- Need for more entertainment for youth

Future engagement topics

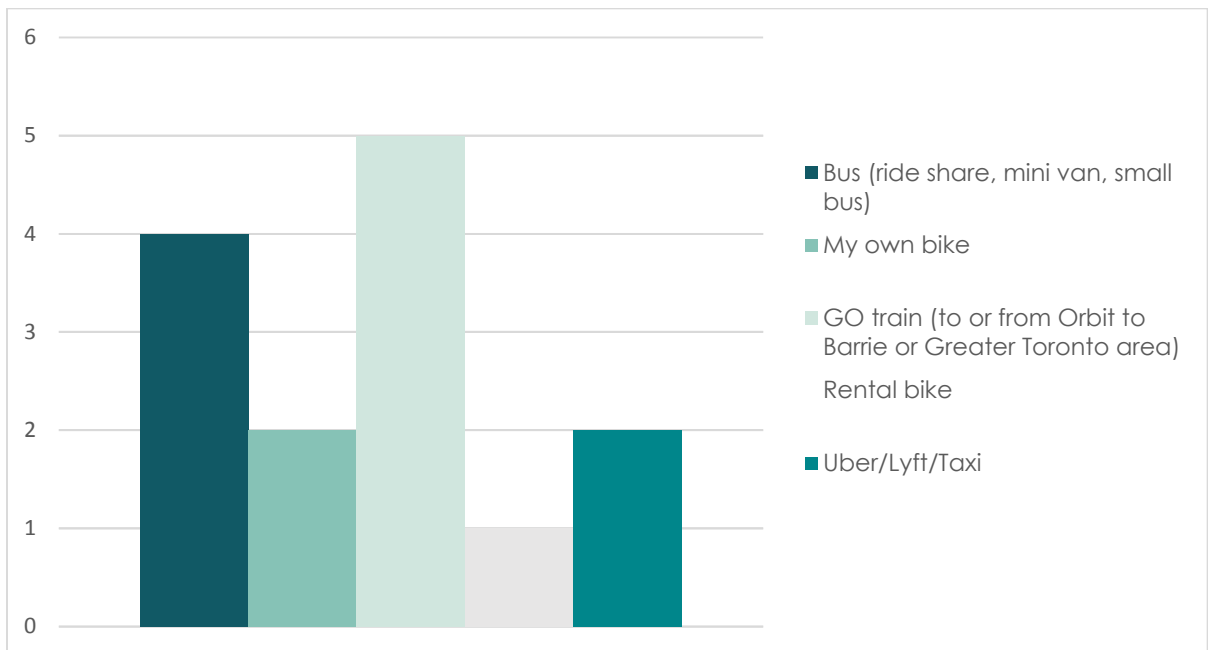
- Public transit and the GO Station



Survey Summary

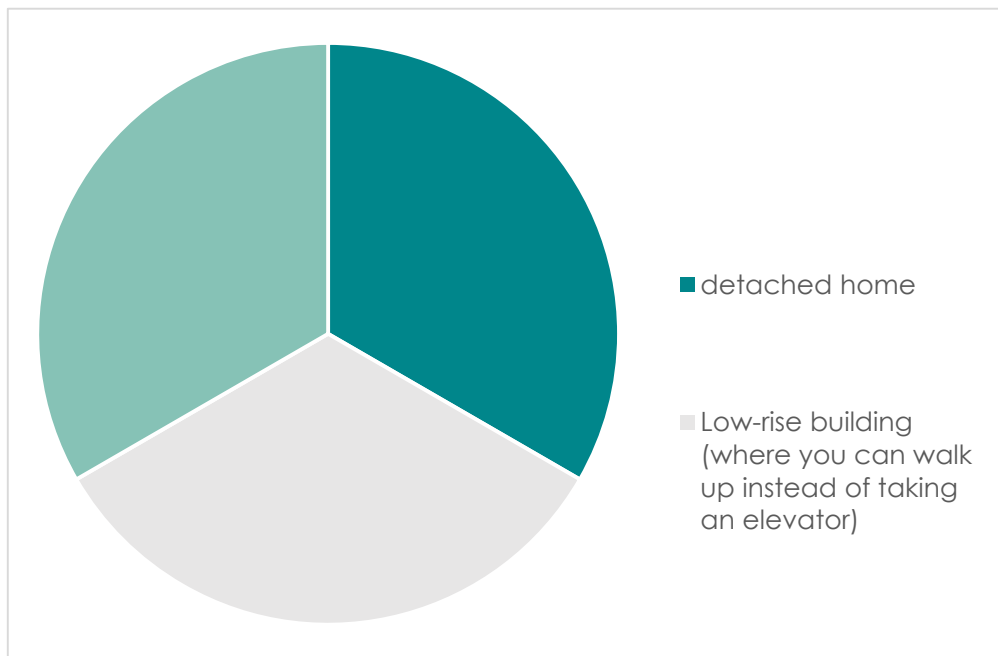
This summary provides an overview of the survey responses for Questions 1, 3 and 4. The survey was completed by 6 participants.

Question 1: Imagine you lived in the Orbit and you had to take a trip that wasn't in your own car. How would you prefer to travel?





Question 3: Imagine you lived in the Orbit, what dwelling or building types would you be interested in living in?



Question 4: What type of neighbourhood functions or public/civic spaces would you like to see in the Orbit?





Appendix A

Feedback Survey Form



ORBIT POTENTIAL & INNOVATION PLAN

YouthConnex Meeting Survey: June 15th

Thank-you for including us in your YouthConnex meeting! We're so happy we had an opportunity to connect with you and we look forward to hearing more of your input as we design Orbit and complete the Orbit Potential and Innovation Plan (OPIP).

As discussed today, the OPIP is our combined Master Servicing Plan and Secondary Planning approach that will aim to guide the implementation of Innisfil's vision for Orbit: a community that will help us grow while preserving our agricultural and natural landscapes.

We have included a few questions below for your input to learn more about what Innisfil youth are looking for in a new community like Orbit. How do you want to move around your neighborhood? What types of buildings do you want to live, study and work in? What public spaces, buildings would you like to see? Where would you like to gather with friends and family and what kind of activities would you like to do? These are just some of the many questions we want you to think about so that we can plan for your future community.

1. Imagine you lived in the Orbit and you had to take a trip that wasn't in your own car. How would you prefer to travel? Please select all that apply.

- GO train (to or from Orbit to Barrie or Greater Toronto area)
- Bus (ride share, mini van, small bus)
- Uber/Lyft/Taxi
- My own bike
- Rental bike
- My own scooter
- Rental scooter
- Car share
- Something else (please write in) _____

2. Would you like not having to own a car?



3. **Imagine you lived in the Orbit, what dwelling or building types would you be interested in living in?**

- Townhome
- Condo building
- Low-rise building (where you can walk up instead of taking an elevator)
- Something else (please write in) _____

4. **What type of neighborhood functions or public/civic spaces would you like to see in the new Orbit? Please list your top five (e.g., theatre, community centre, library, markets etc.)**

5. **Imagine you lived in Orbit, what kind of activities would you like to do with friends and family? (Pick your top three or write your response below)**

- Watch sports at a stadium or sporting field
- Go hiking or walking nearby
- Visit art shows or galleries
- Go shopping at markets or boutique shops
- Other _____

6. **Do you plan on living in Innisfil for the rest of your life?**

- Yes, I hope to live in Innisfil for a long time
- No, I will not be living in Innisfil for a long time
- I'm not sure

If you answered b, can you explain why?

7. **What parts of your current neighbourhood don't you like? Do you have any ideas on how to fix it?**

8. **Do you have any ideas or thoughts on what would make you love where you live?**



9. Did you enjoy today's session? (Please rate using the stars)



10. Is there anything you'd like us to talk about more the next time we meet?

11. Do you have any suggestions or comments as to how we can improve future meetings or sessions with Innisfil Youth?



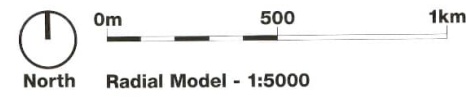
Appendix B

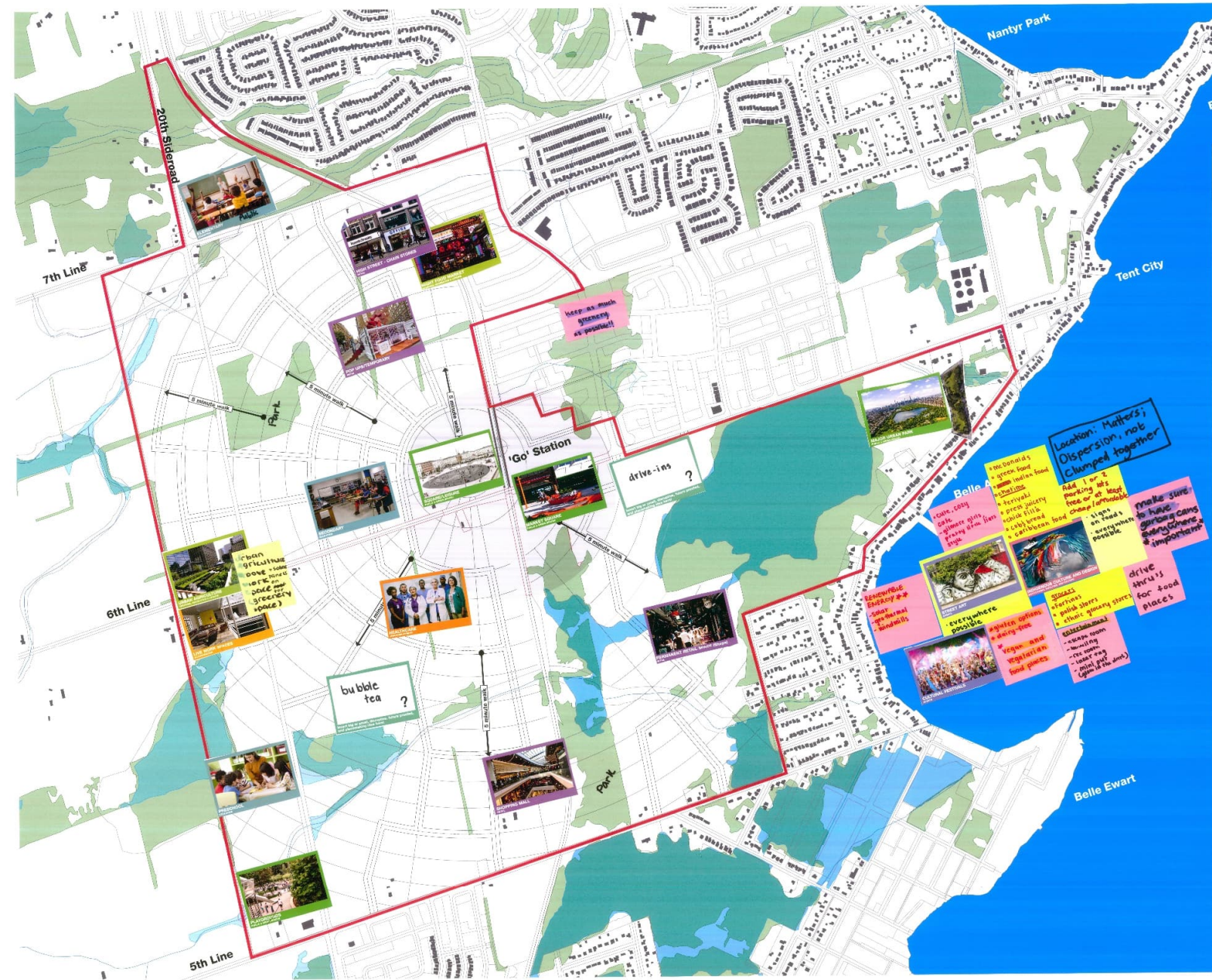
Visioning Exercise Maps



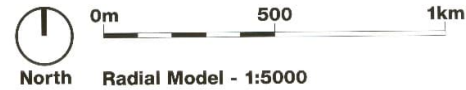
Notes :

- 1) How many districts should the Orbit have and where would they be? What would characterize them? Think about 'placemaking functions' (cultural, civic, employment, leisure, etc.)
- 2) Where should building height be focused and how would you prioritize areas for high rise development?
- 3) Where should public open spaces be located and what would their functionality be?
- 4) Where should public transport and active travel routes be located?
- 5) Where should the main employment spaces be located, and which typology would they be? (offices, workshops, light industry, etc.)





- Notes :**
- 1) How many districts should the Orbit have and where would they be? What would characterize them? Think about 'placemaking functions' (cultural, civic, employment, leisure, etc.)
 - 2) Where should building height be focused and how would you prioritize areas for high rise development?
 - 3) Where should public open spaces be located and what would their functionality be?
 - 4) Where should public transport and active travel routes be located?
 - 5) Where should the main employment spaces be located, and which typology would they be? (offices, workshops, light industry, etc.)





Appendix C

Meeting Slides

Orbit Potential and Innovation Plan (OPIP)

YouthConnex Meeting | 06.15.2022

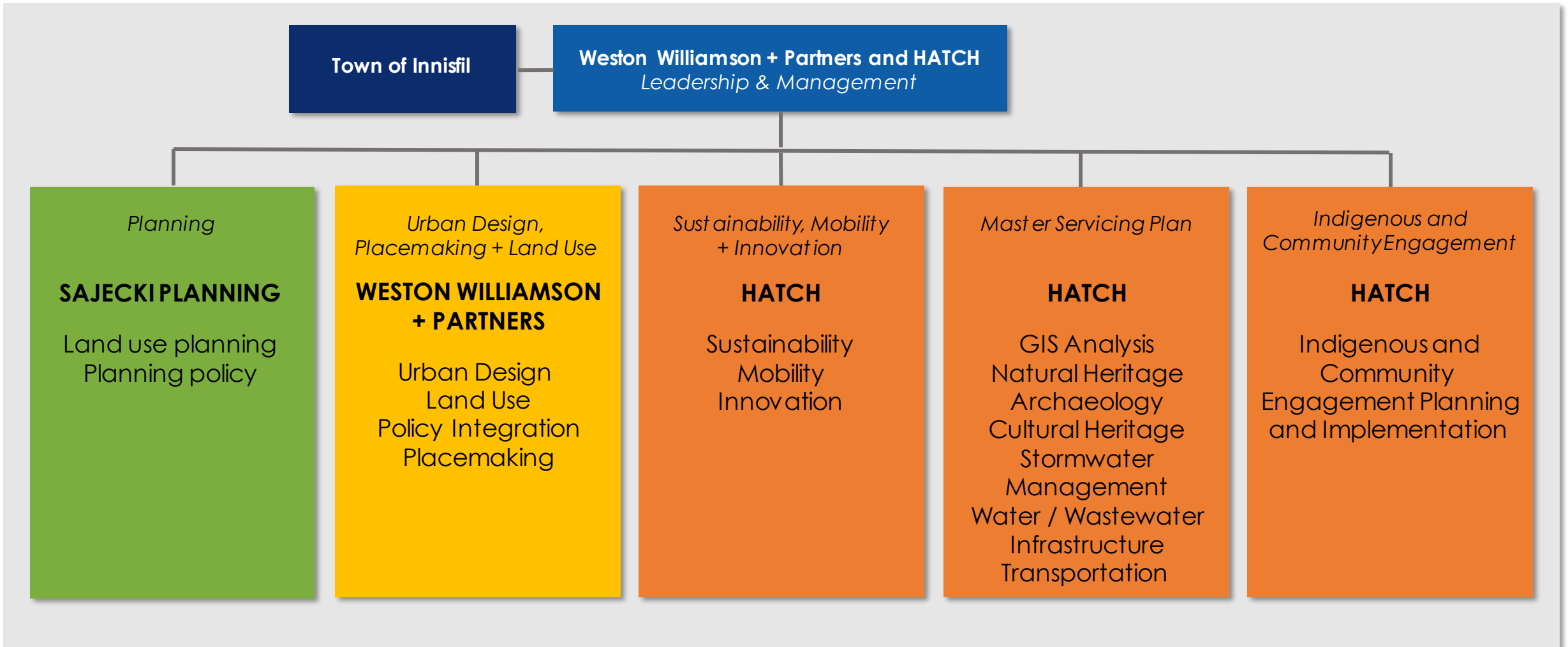


Agenda

- **The Project Team**
- **What is Orbit and the OPIP?**
- **How is Orbit being developed?**
- **Who are we talking to?**
- **Let's map it! (30 minutes)**
- **Teach us!**



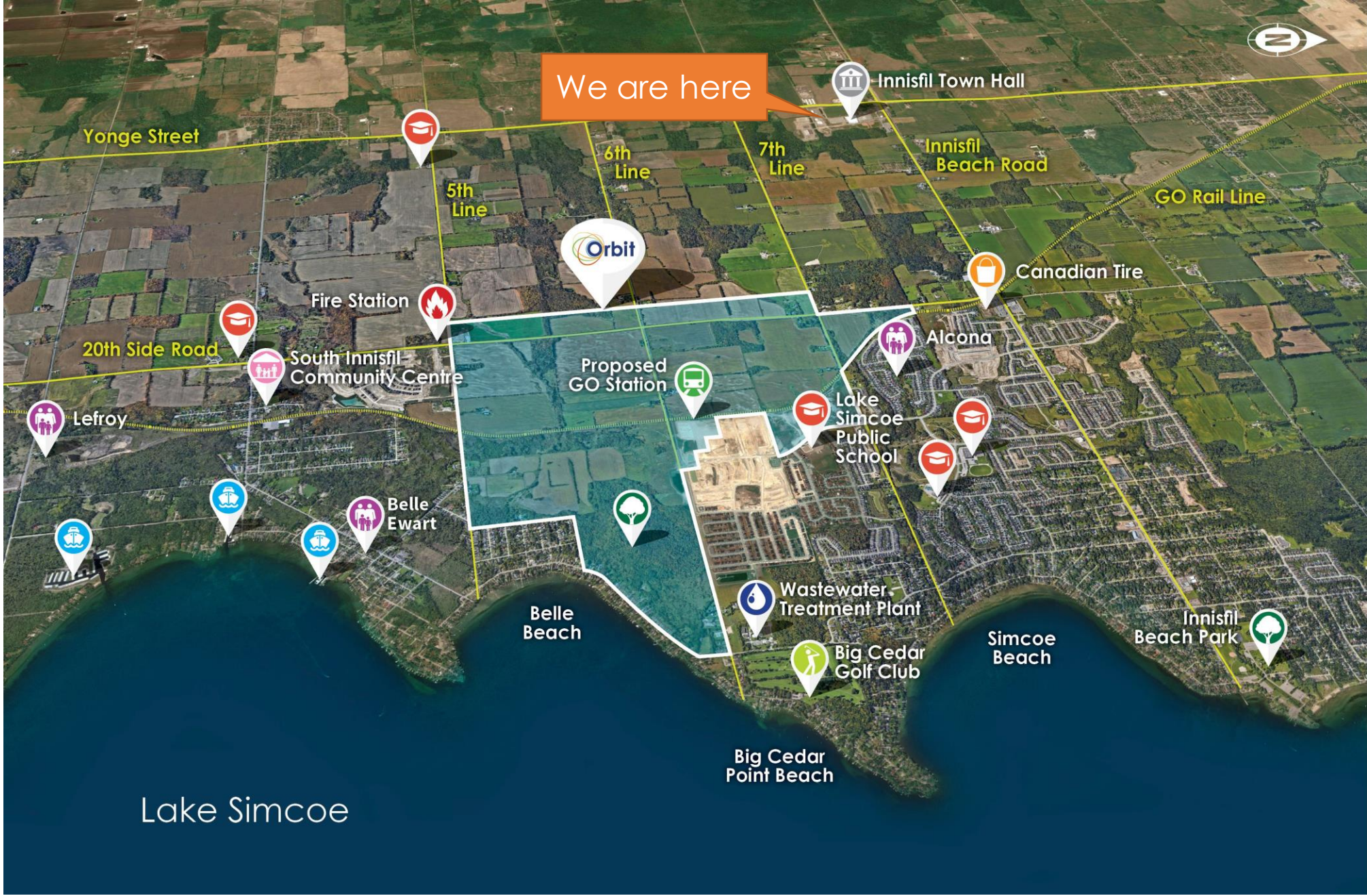
OPIP Project Team



What is the Orbit?

The Orbit is the Town of Innisfil's vision for a complete, cutting-edge community where our small town and rural lifestyles are enhanced by the benefits and attributes of urban living.

What if we could build a place where technology makes life easier? **Imagine a community focused on environmental sustainability, the arts, transit, innovative streets and infrastructure, social interaction, health and wellness, a modern economy, urban agriculture, advanced manufacturing**, all combined with a vibrant start up energy and culture. The Orbit is the future of placemaking and city building, today.



Planning Policy

Population estimates by area

- Minimum densities from MZO correspond to minimum populations for TOC 1, 2 and 3
- Realized populations will depend on site constraints, market demand and planning policies, among other factors



Orbit Vision

Urban structure and form

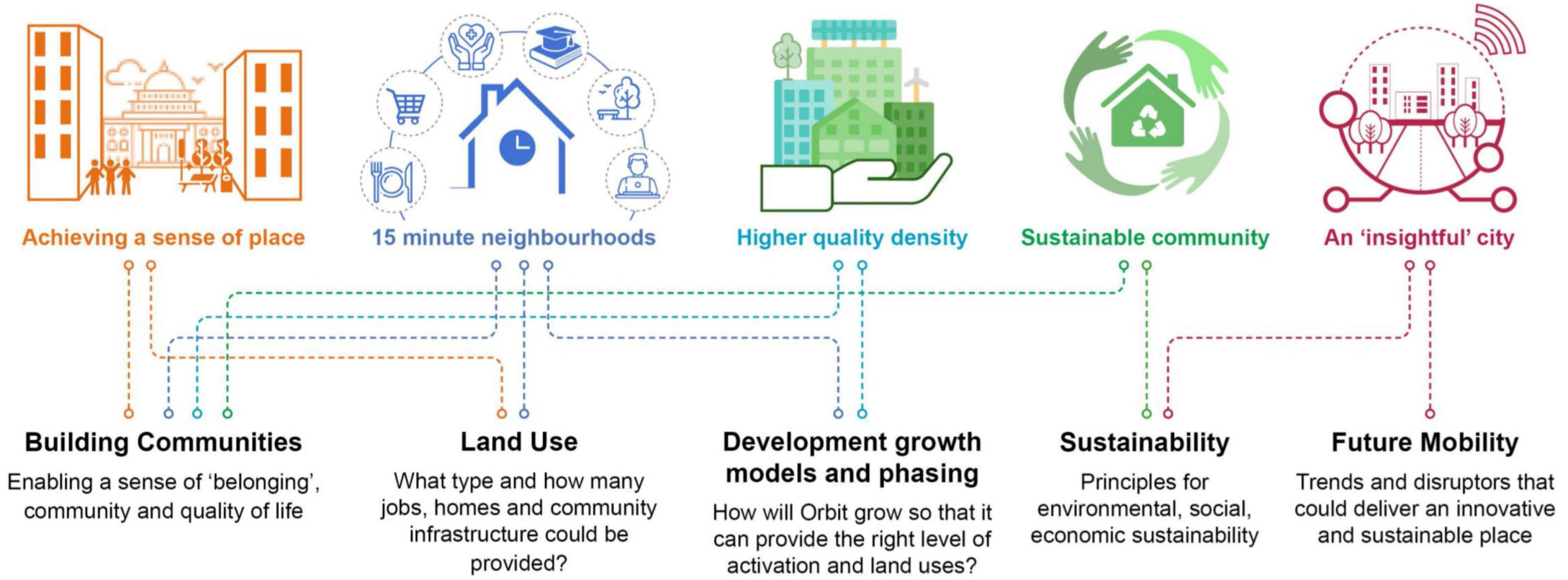
- 1 Radial movement centred on the transport hub
- 2 Concentric circulation patterns
- 3 Linear park along railway
- 4 High density surrounding station and decreasing towards edges

Design considerations

- 5 One single focal point (the station and relative public space)
- 6 Enhance/strengthen access to public space from outer areas
- 7 Avoid repetition in urban pattern and street frontages
- 8 Provide more variety in road hierarchy and typology and enhance pedestrian and cycle movements



Implementing the Vision



Orbit Goals

The Orbit Vision doesn't necessarily strive to re-create city building, but rather blend the best of proven and 'next' practice ideas into the context of the Town and how it wants to grow by achieving the following five goals:



Achieving a sense of place

Greater time in your neighbourhood creates new opportunities for placemaking resulting in more social interactions within better designed spaces



15 Minute Neighbourhoods

Creating 15 Minute Neighbourhoods designed with a People-First approach and integrated greenspaces



Higher quality density

Promote density and diversity within different types of buildings, integrating larger balconies and outdoor spaces to improve living quality



An 'Insightful' City

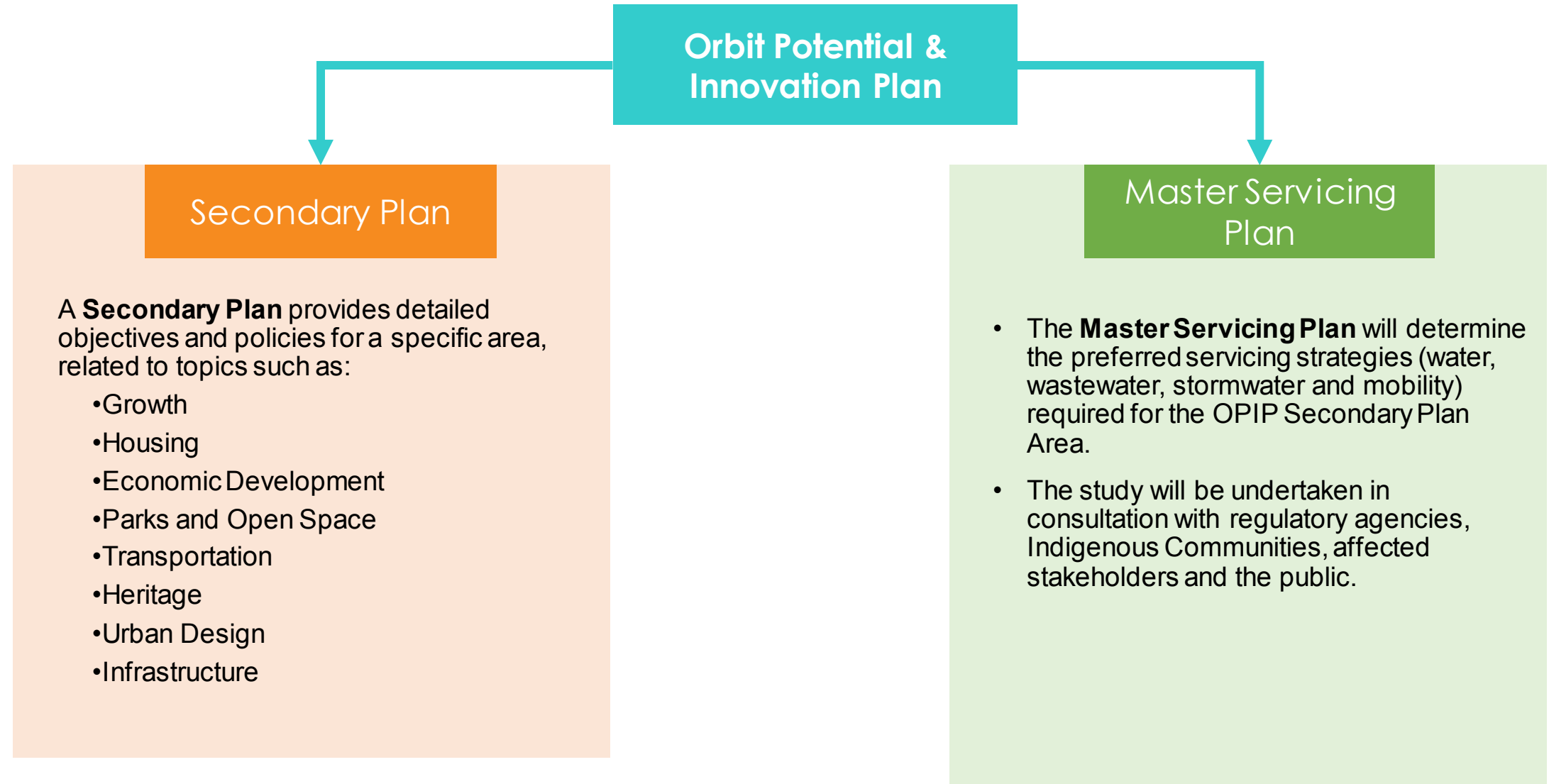
Make day-to-day life easier using technology and Smart Cities concept without losing the focus on good neighbourhood design



Sustainable community

Build a community in a manner that minimizes carbon emissions through the entire process from design to construction to living

What is the OPIP?



How do we plan, design and build the Orbit?

Step 1: Town of Innisfil approves the Orbit development idea and project process

Step 2a: Technical and environmental studies and plans = Orbit Innovation and Potential Plan (OPIP)

Step 2b: Engage the community (you!)

Step 4: Town of Innisfil, community members and environmental regulators review and approve project plans and studies

Step 5: Build the GO Station and surrounding Orbit community

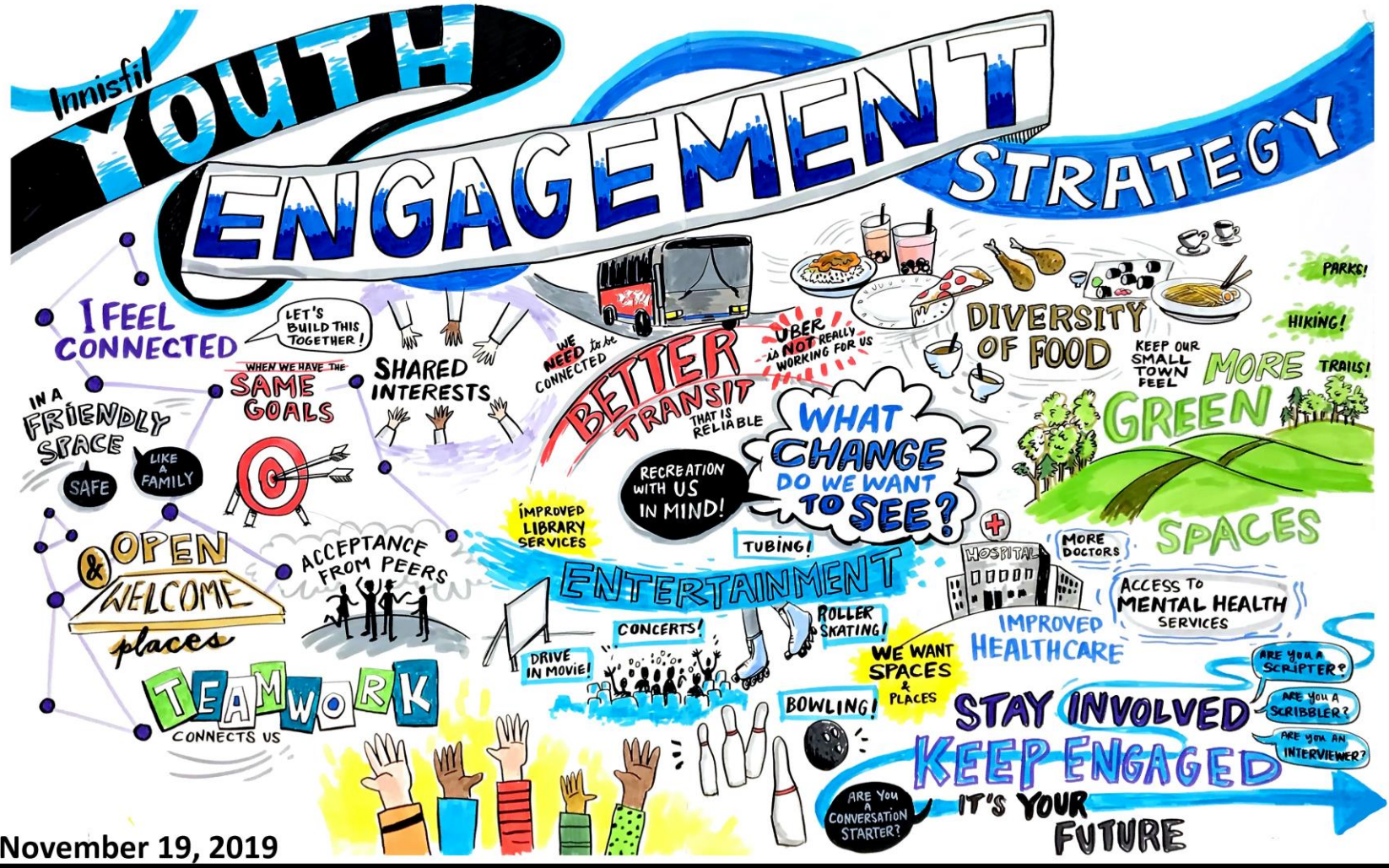


OPIP – who are we talking to?

- The Town of Innisfil
- Indigenous communities
- Landowners
- Community members
- Social Services and Housing
- Future residents
- Agencies and regulators
- YOU!



What we know about YouthConnex



November 19, 2019

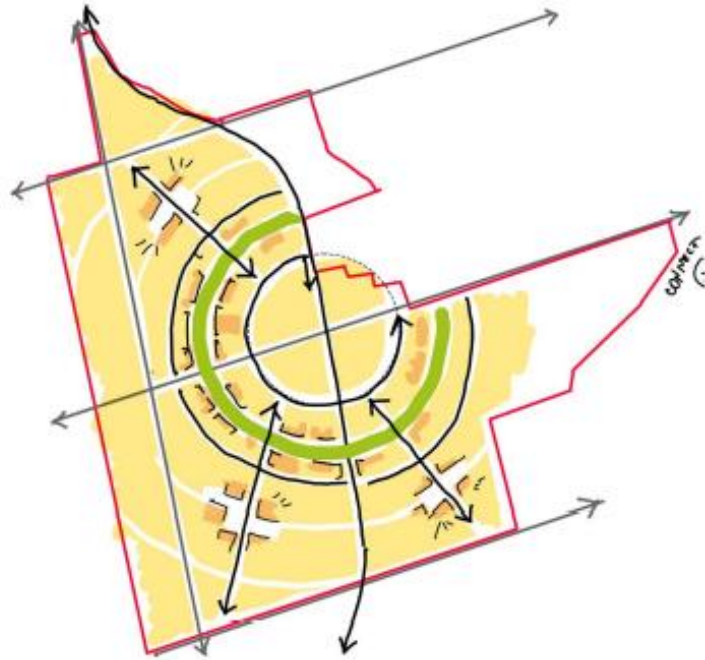
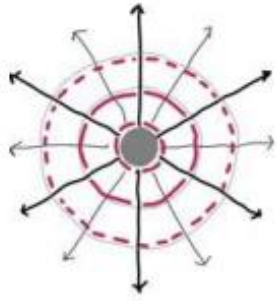


inked by:
DEVON KERSLAKE

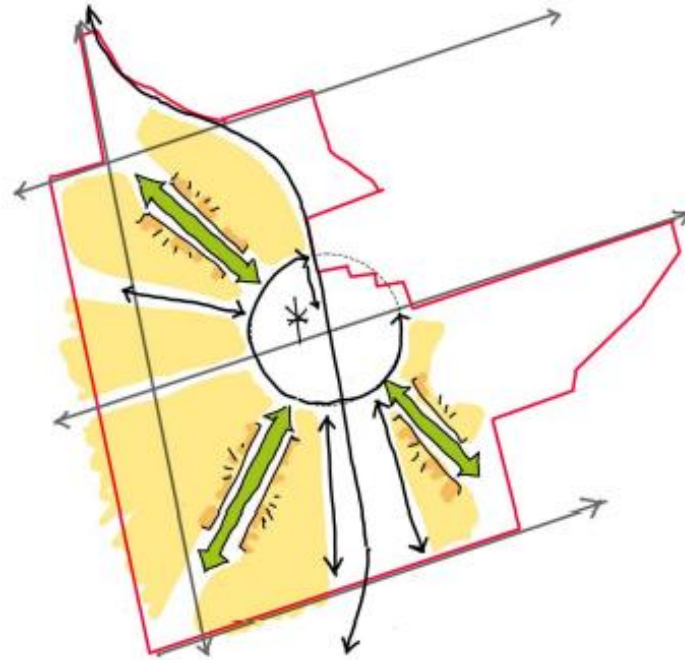
Let's map it!

Area organisational models

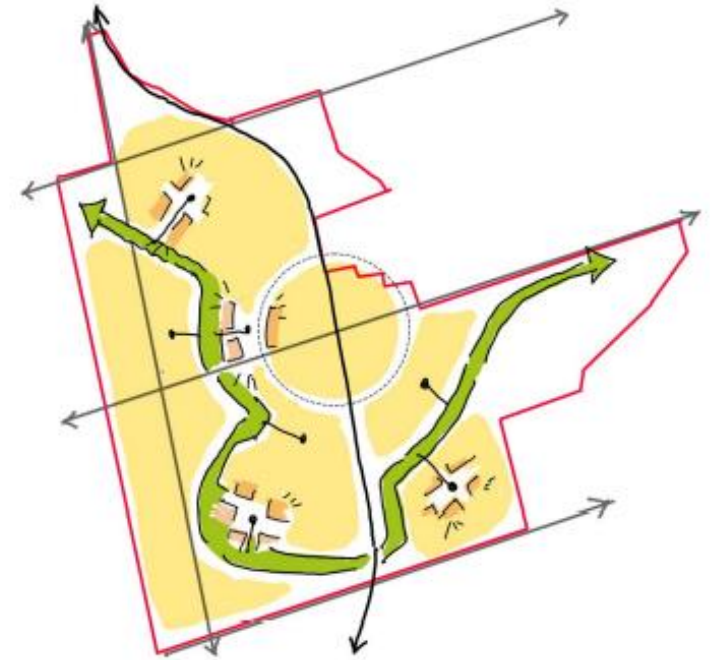
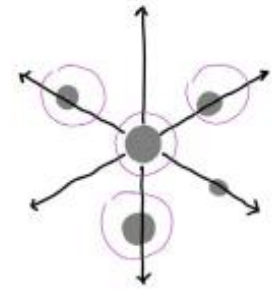
Radial



Arterial



'Dispersed'



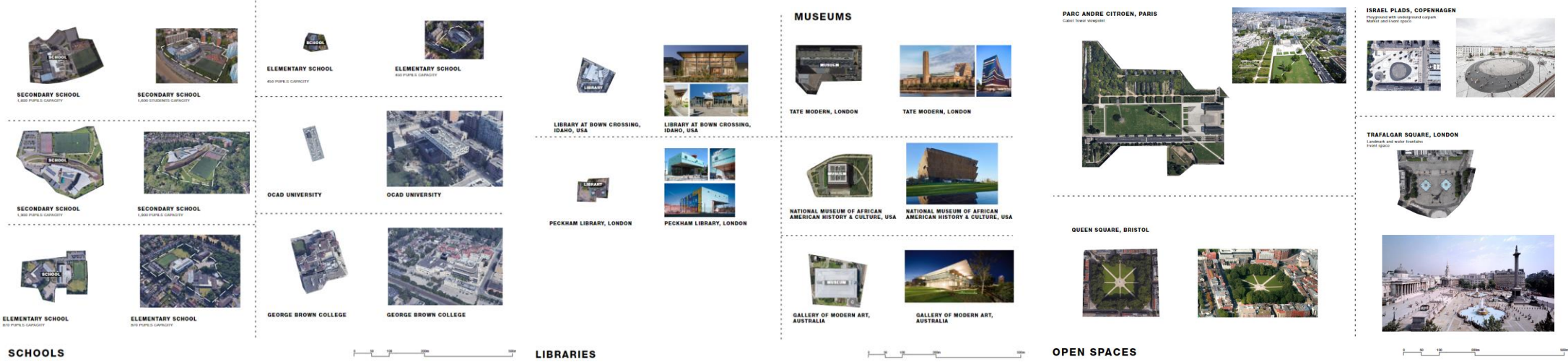
Where does YouthConnex come in?

We need your ideas and opinions to help shape Orbit to be a community reflective of its youth

Key themes for input:

- Types of spaces to interact
- Things to do
- Ways to get around the Orbit

- Green spaces
- Health and wellness
- Jobs and housing





We need your feedback!

**Scan the QR code with your phone
to answer our survey:**

